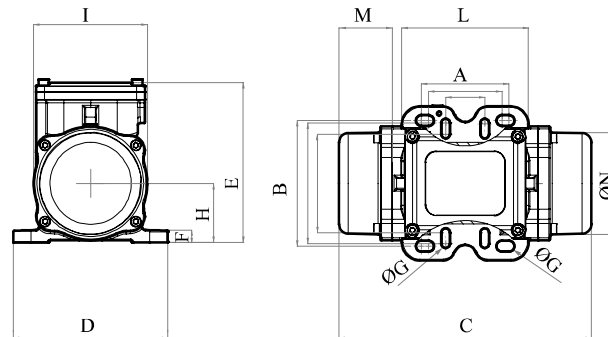


## MVE 220/2E-10A0 (EE20010010A0LA000U)

3 PH - 2 poles - 3600 RPM - 230/460 V - 60 Hz


Working moment (Lb*in)	Unbalance (Lb*in)	Centrifugal force (Lb)	Nominal voltage (V)	Input power (Hp)	Current (A)	Power factor	Ia/In
1.14	0.57	209.44	230/460	0.12	Δ 0.46 Y 0.23	0.75	3.2








Technical Drawings are for illustrative purposes only.

OVERALL DIMENSIONS (inches)																
Weight (Lb)	A	A1	B	B1	G	G1	Holes number	C	D	E	F	H	I	L	M	N
11.02	2.44	1.3	4.17	3.27-4.02	0.35	0.28	4	8.39	5.12	5.31	0.41	1.97	3.78	4.21	1.77	3.35

TECHNICAL FEATURES							
Type of grease	Greased for life	Screw	Washer	Clamping torque (Ft-Lb)	Cable type	Cable gland	
/	Yes	5/16"-1/4"	0.344"x0.688" - 0.281"x0.625"	16.95-6.63	16-4c 80°C	M16 80°C	

BEARINGS LIFE HOURS				
Bearing model	Type	100% C.F	80% C.F	50% C.F
6302 2Z		35097	68549	>100000

CERTIFICATION	
ATEX II2 D Ex tb IIIC Tx Db IP66 IECEx Ex tb IIIC Tx Db IP66 CLASS II DIV.2 GROUP F,G T4 Ex tb IIIC Tx Db IP66 [Tx Size Micro,10-30:100°C - Tx Size 40-91:135°C] CONF.TO UL1004-3, UL1004-1,UL 60079-0,UL60079-31 CERT. CSA C22.2 No.100,CSA C22.2 No.77, CSA C22.2N.60079-0,CSA C22.2N.60079-31 T.Amb -20/+40°C	     

REV.3-12/07/2019

Dimension with coarse degree of accuracy related to UNI 22768/1 Rights reserved to modify technical specifications.