

Martin® SQC2S™ Cleaner Assembly, P/N SQC2S-XXXXXXXXXX

Item	Description	Part Number
1	Mainframe	38657-XX
2	Blade Cartridge	SQC2S-35696-XX
3	Slotted Spring Pin	33840
4	Lock Pin Lanyard Assembly	38024
5	Blade Assembly	SC-XXX
6	Cap Screw	SP04436-30
7	Flat Washer	37724
8	Lock Washer	33055
9	Hex Nut	37723

BLADE NOMENCLATURE

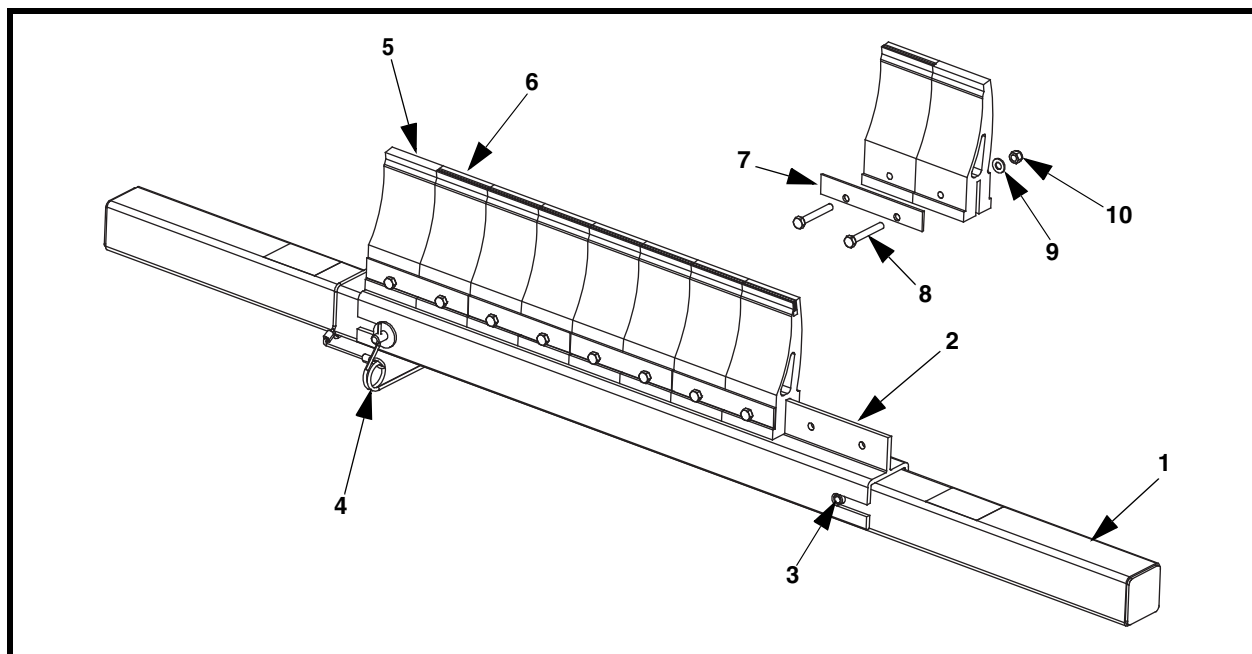
P/N Prefix ——— SC - XX X
 Buffer Type ———
 Blade Type ———

BUFFER TYPE

MR: Molded Rubber
FR: Flame-Retardant Rubber

BLADE TYPE

G: Acid-Resistant
 for belts with clips
H: Acid Resistant
R: General Applications and
 Reversing Belts—Tungsten Carbide



**Martin® SQC2S™ Cleaner Assembly with 3-in. Martin® SAF2™ Style Blades,
P/N SQC2S-XXXXXX3XXX**

Item	Description	Part Number
1	Mainframe	38657-XXX
2	Blade Cartridge	SQC2S-35696-XX3X
3	Slotted Spring Pin	33840
4	Lock Pin Lanyard Assembly	38024
5	Urethane Blade	38718-UXXX
6	Blade with Carbide Tip	38718-TXX
7	Backing Plate	38280
8	Cap Screw	38040
9	Flat Washer	37724
10	Elastic Lock Nut	33054

BLADE NOMENCLATURE **38718 - X X XX**

P/N Prefix _____
 Blade Type _____
 Belt Type _____
 Blade Color _____

BLADE TYPE

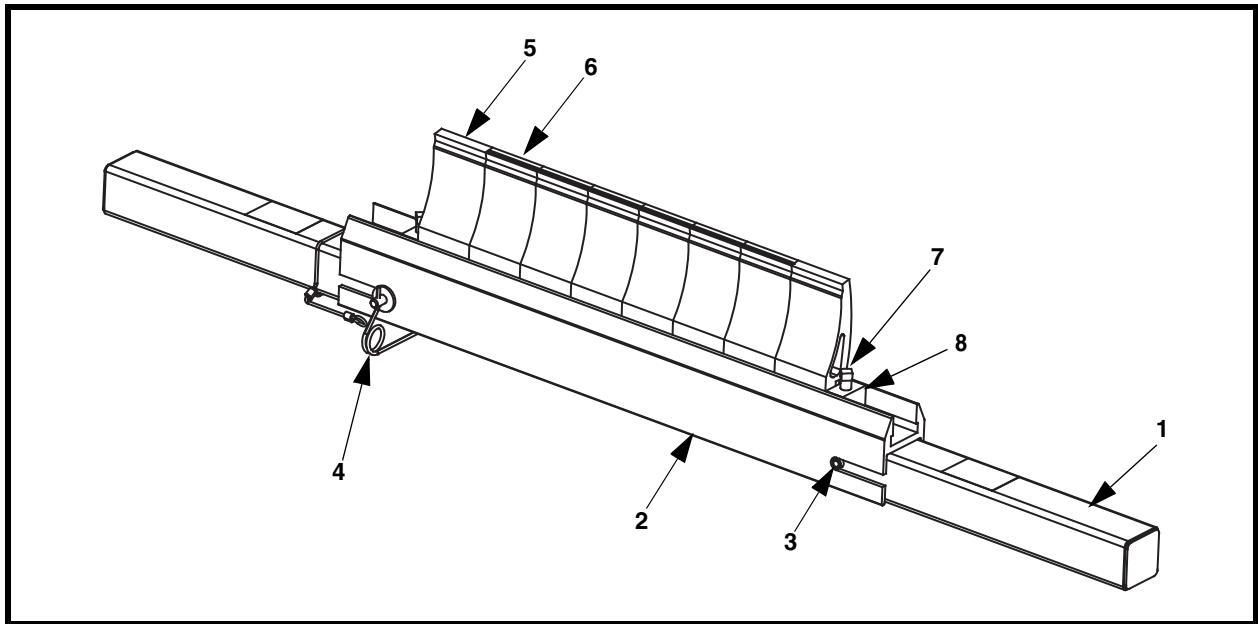
U: Urethane
T: Tungsten Carbide Tipped

BELT TYPE

R: Reversing
Blank: One Direction

BLADE COLOR

BR: Brown
GR: Green
NB: Navy Blue
Blank: Orange



Martin® SAF2™ Cleaner Assembly, P/N SAF2S-XXXXXX3XXX

Item	Description	Part Number
1	Mainframe	38657-XXX
2	Blade Cartridge	33843S-XX
3	Slotted Spring Pin	33840
4	Lock Pin Lanyard Assembly	38024
5	Urethane Blade	38718-UXXX
6	Blade with Carbide Tip	38718-TXX
7	Set Screw	22763-06
8	End Stop	34048

BLADE NOMENCLATURE

38718 - X XX

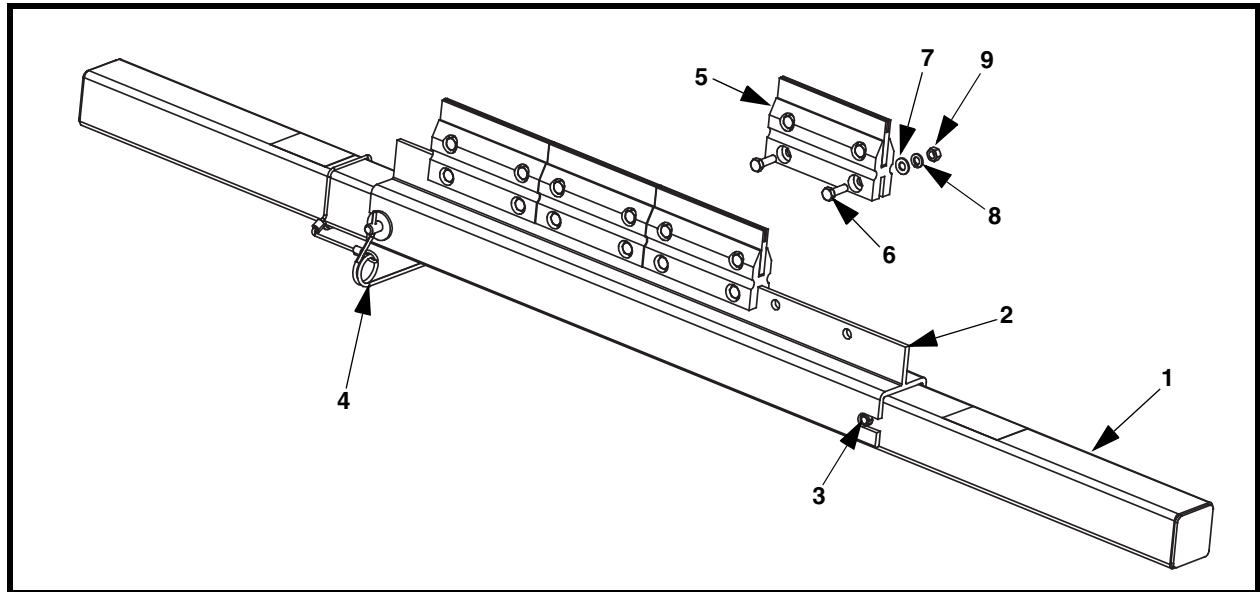
P/N Prefix —————
 Blade Type —————
 Blade Color —————

BLADE TYPE

U: Urethane
T: Tungsten Carbide Tipped

BLADE COLOR

BR: Brown
GR: Green
NB: Navy Blue
Blank: Orange



**Martin® SQC2S™ Cleaner Assembly with Mini Martin® SQC2S™ Style Blades,
P/N SQC2MS-XXXXXXXXXX**

Item	Description	Part Number
1	Mainframe	38657-XX
2	Blade Cartridge	SQC2MS-35696-XX
3	Slotted Spring Pin	33840
4	Lock Pin Lanyard Assembly	38024
5	Blade Assembly	SCM-MRR
6	Cap Screw	36052
7	Flat Washer	37724
8	Lock Washer	33055
9	Hex Nut	37723