

# AIRMATIC®

WE'LL HANDLE IT.



## CDX SERIES

Foot Mounted Electric Vibrators

### AIRMATIC

284 Three Tun Rd. Malvern, PA 19355

215.333.5600

infocenter@airmatic.com

airmatic.com

The CDX explosion proof vibrators have been designed for use in industrial processes with a potentially explosive atmosphere.

The enclosure of the CDX vibrators is characterized by increased thickness and joints to prevent the transmission of an internal explosion to the surrounding area.

The CDX series is characterized and enhanced by many different certifications, depending on the vibrator model, as shown in these pages.

## CDX TECHNICAL FEATURES

### Power supply

Three-phase voltage from 24V to 690V (limit at 600V for UL and CSA certifications), 50Hz or 60Hz, or single-phase 100-130V 60Hz and 200-240V 50Hz; suitable for use with a PWM inverter from 20Hz to the base frequency with constant torque load profile.

### Polarity

2, 4, 6 and 8 poles.

### Standards and Regulations

ATEX Directive 2014/34/UE;  
EN/IEC 60079-0, EN/IEC 60079-1,  
EN/IEC 60079-31, UL 674-886, CSA C22.2.  
See also tables.

### Quality Controls

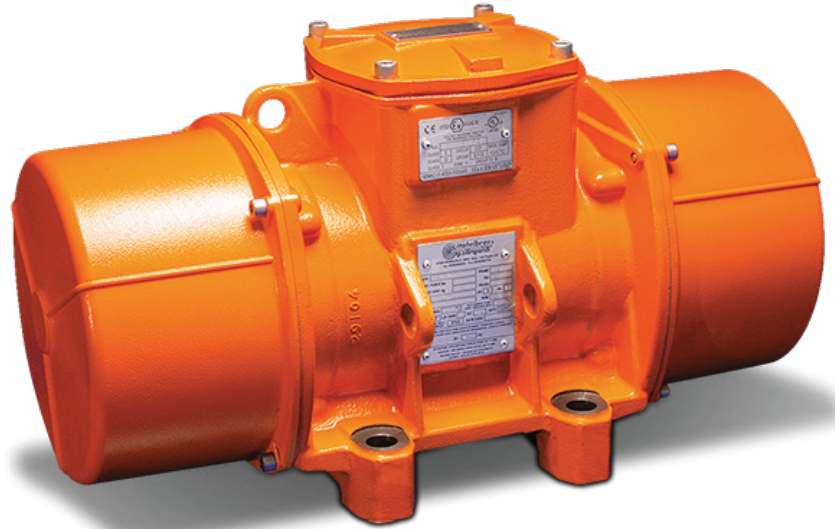
The components that affect protection are 100% accurately controlled and recorded with traceability.

### Functioning

Continuous service (S1) at maximum declared centrifugal force and electric power. Intermittent services are also possible depending on the type of vibrator and the operating conditions. For detailed information, contact our technical assistance office.

### Centrifugal force

Range extended to 49200 lbs (220 kN), with centrifugal force adjustable from 0 to 100%.



### Mechanical protection

IP66 according to IEC/EN 60529.  
Protection against mechanical impacts IK 08 according to IEC/EN 62262.

### Insulation class

Class F (311°F).

### Tropicalization

Standard on all vibrators, with vacuum encapsulation up to size 35, with “drop by drop” trickle system for larger sizes.

### Ambient temperature

From -4°F to +104°F (-20°C to +40°C).  
See also approval table for other ambient temperatures.

### Vibrator thermal protection

With thermal protector at 266°F (130°C) for the entire CDX range, or on request with PTC thermistors rated heat detectors 266°F (130°C).

### Fixing of the vibrator

In all positions and therefore without restriction.

### Lubrication

All vibrators are lubricated in the factory and do not require further lubrication at start-up.

### Terminal box

Large terminal box to facilitate electrical connection. The terminal cover, with increased thickness, is constructed to contain internal explosions. Special shaped terminals allow to fix the power supply cable, protecting it from loosening.

### Electric motor

Three-phase and single-phase asynchronous type. Insulated windings using vacuum encapsulating up to size 35; using the “drop by drop” trickle system with Class H resin for the larger sizes. The rotor is die cast aluminum.

### Casing

In high-tensile aluminum alloy up to size 30, in spheroidal cast iron for larger sizes.

### Bearing flange

In spheroidal or grey cast iron. The geometry of the flange transmits the load to the casing uniformly.

### Bearings

Custom made with particular geometry, especially designed for Italvibras, suitable to support both high radial and axial loads.

### Motor shaft

In treated steel alloy (Isothermic hardening) resistant to stress.

### Eccentric weights

Allow adjustment of the centrifugal force. This adjustment is realized by a graduated scale, which expresses the centrifugal force as a percentage of the maximum centrifugal force.

### Weight covers

In aluminium alloy.  
Special coatings provided on CDX-G types. On request available also in stainless steel for CDX-G types.

### Painting

Electrostatic surface treatment based on polymerised epoxy polyester powder in oven at 392°F (200°C). Tested in salt spray for 500 hours.

### Other features




The CDX series is supplied without cable gland and with NPT threaded conduit opening.

Other mounting bolt patterns are available. For further details please contact sales offices at Italvibras.

The technical data and models listed in this catalogue are not binding. Italvibras reserves the right to modify them without prior notice.  
A patented system, called ARS, prevents adjustment errors.

The CDX-G series, available in CDX frame sizes 35 to 80, is specifically designed for use in industrial processes in a potentially explosive gas atmosphere, among other applications they are commonly used on oil and gas drilling rigs. The CDX-G series has weight covers and terminal box covers with special protection coatings; weight covers can be supplied in stainless steel upon request.



Approvals	series CDX	series CDX-G
	Class I, Groups CD. Class II, Groups EFG. Temp. Class T4 (275°F) (Amb. Temp. -4°F÷+104°F)	Class I, Groups CD. Temp. Class T2C (446°F) (Amb. Temp. -4°F÷+140°F)
 	ATEX II2G Ex d IIB 120°C Gb II2D Ex tb IIIC T120°C Db (Amb. Temp. -4°F÷+104°F)  Ex d IIB 120°C Gb Ex tb IIIC T120°C Db (Amb. Temp. -4°F÷+104°F)	ATEX II2G Ex d IIB 160°C Gb (Amb. Temp. -4°F÷+140°F)  Ex d IIB 160°C Gb (Amb. Temp. -4°F÷+140°F)
<b>Notes</b>	Version with Amb. Temp. -4°F to +104°F and other temperature classes is available.	Version with cULus temperature class T3C (140°F) with thermal protection is available.

### Certifications



Compliance with the applicable European Union directives.



Certificate: LR 100948  
Class I, Groups CD  
Class II, Groups EFG  
Temp. Class T4 (275°F)  
CSA Standard C22.2, UL N°674-886



Certificate: E129825  
Class I, Groups CD  
Class II, Groups EFG  
Temp. Class T4 (275°F)  
UL Standard N°674-886, CSA C22.2



Certification for Eurasian Customs Union  
N° TC RU C-IT.ГБ08.B.02190



Certificate: DEMKO 07 ATEX 0612032X  
II2D Ex tb IIIC T248°F Db  
II2G Ex d IIB 248°F Gb  
ATEX Directive 2014/34/UE  
EN 60079-0, EN 60079-1, EN 60079-31



KOSHA Korea  
Certificati n° 11-AV4BO-0353/4/5/6/7/8/60  
Ex d IIB 248°F  
Ex td A21 IP66 T248°F



Certificate: IECEx UL 09.0034X  
Ex tb IIIC T248°F Db  
Ex d IIB 248°F Gb  
IEC 60079-0, IEC 60079-1, IEC 60079-31

## CDX

### 2 poles - 3,000/3,600 rpm



#### Three-phase

DESCRIPTION				MECHANICAL SPECIFICATIONS						ELECTRICAL SPECIFICATIONS												
Code	Type	Type (EU)	SIZE	Certifications					Static moment* in-lbs		Centrifugal force lbs		Weight lbs		Power Input W		Power Output HP		Max. current A		Ia/In	
				●	○	●	●	●	50Hz	60Hz	50Hz	60Hz	50Hz	60Hz	50Hz	60Hz	50Hz	60Hz	50Hz	60Hz	400V 50Hz	460V 60Hz
600384	CDX 36-650	CDX 3/300-G/D	10	●					2.61	1.96	664	717	25.3	24.2	260	270	0.24	0.25	0.60	0.50	3.47	4.20
600385	CDX 36-1040	CDX 3/500-G/D	20	●					5.04	3.03	1284	1109	37.4	35.2	450	500	0.44	0.52	0.80	0.75	4.21	4.80
600387	CDX 36-1660	CDX 3/800-G/D	30	●					6.48	4.86	1649	1782	51.3	49.3	650	685	0.67	0.70	1.10	1.00	3.83	6.00
600389	CDX 36-2530	CDX 3/1100-G/D	35	●	●	●	●	●	9.56	6.35	2431	2334	74.8	72.6	600	710	0.64	0.74	0.90	0.93	4.78	4.96
600437	CDX 36-3530	CDX 3/1500-G/D	50	●	●	●	●	●	14.0	9.65	3575	3524	119	113	1000	1200	1.1	1.2	1.62	1.72	6.00	6.32
600317	CDX 36-4600	CDX 3/2100-G/D	50	●	●	●	●	●	18.2	12.5	4651	4576	132	129	1000	1260	1.2	1.5	1.71	1.85	6.95	7.19
600320	CDX 36-5060	CDX 3/2300-G/D	60	●	●	●	●	●	19.3	13.8	4919	5060	182	175	2000	2200	2.0	2.2	3.23	3.20	7.47	8.60
600323	CDX 36-7040	CDX 3/3200-G/D	70	●	●	●	●	●	29.9	18.7	7605	6846	251	242	3100	3250	3.4	3.4	5.23	5.00	6.37	8.00
600486	CDX 36-10500	CDX 3/4700-G/D	80	●	●	●	●	●	40.8	28.6	10362	10472	328	317	4500	4500	4.9	4.9	7.13	6.60	6.53	7.00

#### Single-phase

Code	Type	Type (EU)	SIZE	Certifications					Static moment* in-lbs		Centrifugal force lbs		Weight lbs		Power Input W		Power Output HP		Max. current A		Ia/In	
				●	○	●	●	●	50Hz	60Hz	50Hz	60Hz	50Hz	60Hz	50Hz	60Hz	50Hz	60Hz	220V 50Hz	115V 60Hz	50Hz	60Hz
600384	CDX 36-650	CDX 3/300-G/D	10	●					2.61	1.96	664	717	25.3	24.2	280	280	0.24	0.27	1.25	2.40	2.48	3.52
600385	CDX 36-1040	CDX 3/500-G/D	20	●					5.04	3.03	1284	1109	37.4	35.2	500	500	0.46	0.47	2.30	4.50	3.35	4.22
600387	CDX 36-1660	CDX 3/800-G/D	30	●					6.48	4.86	1649	1782	51.3	49.3	700	750	0.60	0.67	3.25	7.00	4.00	4.14

## 4 poles - 1,500/1,800 rpm

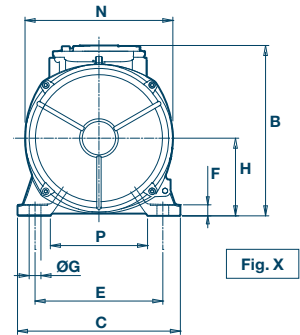
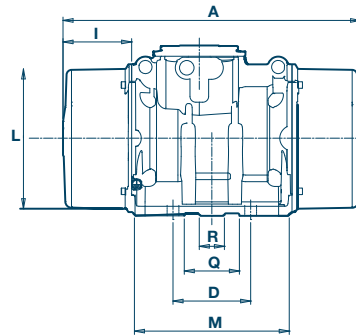
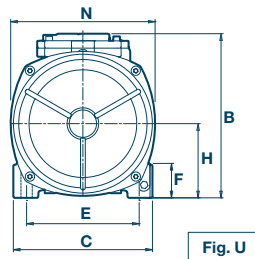
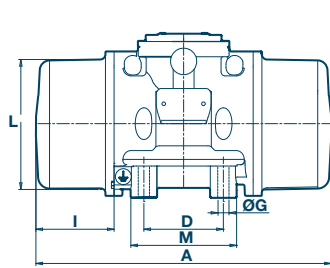
#### Three-phase

DESCRIPTION				MECHANICAL SPECIFICATIONS						ELECTRICAL SPECIFICATIONS												
Code	Type	Type (EU)	SIZE	Certifications					Static moment* in-lbs		Centrifugal force lbs		Weight lbs		Power Input W		Power Output HP		Max. current A		Ia/In	
				●	○	●	●	●	50Hz	60Hz	50Hz	60Hz	50Hz	60Hz	50Hz	60Hz	50Hz	60Hz	400V 50Hz	460V 60Hz	50Hz	60Hz
601409	CDX 18-470	CDX 15/200-G/D	10	●					7.32	5.11	469	471	30.8	28.6	170	170	0.13	0.13	0.41	0.40	2.34	2.75
601410	CDX 18-910	CDX 15/400-G/D	20	●					14.2	9.83	906	904	47.1	44.0	300	350	0.29	0.37	0.60	0.60	3.33	3.50
601411	CDX 18-1300	CDX 15/550-G/D	20	●					19.0	14.2	1214	1302	50.2	47.1	300	350	0.29	0.37	0.60	0.60	3.33	3.50
601412	CDX 18-1670	CDX 15/700-G/D	30	●					24.9	18.2	1584	1672	66.7	63.8	525	665	0.51	0.66	0.92	0.98	3.48	3.43
601413	CDX 18-2150	CDX 15/1100-G/D	35	●	●	●	●	●	36.1	23.6	2299	2160	101	91.3	520	660	0.49	0.59	0.81	0.88	4.65	4.84
601424	CDX 18-3190	CDX 15/1410-G/D	50	●	●	●	●	●	48.8	34.8	3109	3188	139	129	750	1000	0.73	0.99	1.35	1.50	5.59	5.60
601328	CDX 18-3850	CDX 15/1710-G/D	50	●	●	●	●	●	62.2	42.2	3956	3865	149	144	1050	1300	1.2	1.5	1.81	1.90	5.09	5.46
601358	CDX 18-4400	CDX 15/2000-G/D	50	●	●	●	●	●	71.0	48.8	4519	4473	160	147	1050	1300	1.2	1.5	1.81	1.90	5.09	5.46
601329	CDX 18-5380	CDX 15/2410-G/D	60	●	●	●	●	●	83.6	58.6	5324	5377	216	202	1500	1650	1.7	2.0	2.95	2.90	7.80	7.76
601330	CDX 18-8300	CDX 15/3810-G/D	70	●	●	●	●	●	133	89.9	8448	8237	306	295	2270	2250	2.5	2.5	3.80	3.50	6.84	8.09
601623	CDX 18-9420	CDX 15/9420	70	●	●	●	●	●	150	102	9517	9350	315	301	2270	2250	2.5	2.5	3.80	3.50	6.84	8.09
601487	CDX 18-10900	CDX 15/5010-G/D	80	●	●	●	●	●	173	119	11015	10870	378	363	2800	2800	2.8	2.8	4.75	4.40	6.74	7.20

#### Single-phase

Code	Type	Type (EU)	SIZE	Certifications					Static moment* in-lbs		Centrifugal force lbs		Weight lbs		Power Input W		Power Output HP		Max. current A		Ia/In	
				●	○	●	●	●	50Hz	60Hz	50Hz	60Hz	50Hz	60Hz	50Hz	60Hz	50Hz	60Hz	220V 50Hz	115V 60Hz	50Hz	60Hz
601409	CDX 18-470	CDX 15/200-G/D	10	●					7.32	5.11	469	471	30.8	28.6	210	230	0.15	0.16	1.00	2.00	1.50	1.85
601410	CDX 18-910	CDX 15/400-G/D	20	●					14.17	9.83	906	904	47.1	44.0	240	320	0.16	0.24	1.20	2.80	2.50	2.50
601401	CDX 18-1300	CDX 15/550-G/D	20	●					19.04	14.17	1214	1302	50.2	47.1	240	320	0.16	0.24	1.20	2.80	2.50	2.50
601412	CDX 18-1670	CDX 15/700-G/D	30	●					24.87	18.17	1584	1672	66.7	63.8	450	550	0.32	0.40	2.15	5.15	5.44	3.63

\* Working moment = 2 x static moment.



DIMENSIONAL SPECIFICATIONS (inches)

Type	Fig.	A	B	C	Holes				F	H	I	L	M	N	P	Q	R	Capacitor (µF)		Cable entry
					D	E	ØG	N°										220V 50Hz	115V 60Hz	
CDX 36-650	U	10.04	7.52	5.98	3.54	4.92	13	4	1.10	3.05	2.13	5.12	5.04	5.91	-	-	-	-	-	NPT 1/2"
CDX 36-1040	U	11.34	8.58	6.57	4.13	5.51	13	4	1.18	3.54	2.56	5.91	5.51	6.89	-	-	-	-	-	NPT 1/2"
CDX 36-1660	U	12.36	9.09	8.07	4.72	6.69	17	4	1.77	4.02	2.60	6.97	6.38	7.87	-	-	-	-	-	NPT 1/2"
CDX 36-2530	U	17.56	9.80	8.27	4.72	6.69	17	4	2.05	4.41	4.65	7.56	6.30	8.58	-	-	-	-	-	NPT 3/4"
CDX 36-3530	X	20.47	10.98	9.25	5.51	7.48	22	4	0.71	4.57	5.28	8.27	9.69	8.86	5.51	3.15	-	-	-	NPT 3/4"
CDX 36-4600	X	20.47	10.98	9.25	5.51	7.48	22	4	0.71	4.57	5.28	8.27	9.69	8.86	5.51	3.15	-	-	-	NPT 3/4"
CDX 36-5060	X	22.52	12.28	10.83	6.10	8.86	22	4	0.87	5.31	5.75	9.41	10.79	9.96	6.65	4.13	1.97	-	-	NPT 3/4"
CDX 36-7040	X	23.39	13.50	12.80	6.10	10.04	23.5	4	0.87	6.10	5.39	10.98	12.36	11.61	7.64	4.33	1.97	-	-	NPT 3/4"
CDX 36-10500	X	25.12	14.13	13.98	7.09	11.02	26	4	0.87	6.50	6.06	11.93	12.60	12.60	7.80	4.72	1.97	-	-	NPT 3/4"

Type	Fig.	A	B	C	Holes				F	H	I	L	M	N	P	Q	R	Capacitor (µF)		Cable entry
					D	E	ØG	N°										220V 50Hz	115V 60Hz	
CDX 36-650	U	10.04	7.52	5.98	3.54	4.92	0.51	4	1.10	3.05	2.13	5.12	5.04	5.91	-	-	-	16	25	NPT 1/2"
CDX 36-1040	U	11.34	8.58	6.57	4.13	5.51	0.51	4	1.18	3.54	2.56	5.91	5.51	6.89	-	-	-	12.5	50	NPT 1/2"
CDX 36-1660	U	12.36	9.09	8.07	4.72	6.69	0.67	4	1.77	4.02	2.60	6.97	6.38	7.87	-	-	-	25	90	NPT 1/2"

DIMENSIONAL SPECIFICATIONS (inches)

Type	Fig.	A	B	C	Holes				F	H	I	L	M	N	P	Q	R	Capacitor (µF)		Cable entry
					D	E	ØG	N°										220V 50Hz	115V 60Hz	
CDX 18-470	U	11.85	7.52	5.98	3.54	4.92	0.51	4	1.10	3.05	3.03	5.12	5.04	5.91	-	-	-	-	-	NPT 1/2"
CDX 18-910	U	13.78	8.58	6.57	4.13	5.51	0.51	4	1.18	3.54	3.78	5.91	5.51	6.89	-	-	-	-	-	NPT 1/2"
CDX 18-1300	U	15.43	8.58	6.57	4.13	5.51	0.51	4	1.18	3.54	4.61	5.91	5.51	6.89	-	-	-	-	-	NPT 1/2"
CDX 18-1670	U	15.51	9.09	8.07	4.72	6.69	0.67	4	1.77	4.02	4.17	6.97	6.38	7.87	-	-	-	-	-	NPT 1/2"
CDX 18-2150	U	17.56	9.80	8.27	4.72	6.69	0.67	4	2.05	4.41	4.65	7.56	6.30	8.58	-	-	-	-	-	NPT 3/4"
CDX 18-3190	X	20.47	10.98	9.25	5.51	7.48	0.87	4	0.71	4.57	5.28	8.27	9.69	8.86	5.51	3.15	-	-	-	NPT 3/4"
CDX 18-3850	X	20.47	10.98	9.25	5.51	7.48	0.87	4	0.71	4.57	5.28	8.27	9.69	8.86	5.51	3.15	-	-	-	NPT 3/4"
CDX 18-4400	X	23.39(50Hz) 20.47(60Hz)	10.98	9.25	5.51	7.48	0.87	4	0.71	4.57	6.73(50Hz) 5.28(60Hz)	8.27	9.69	8.86	5.51	3.15	-	-	-	NPT 3/4"
CDX 18-5380	X	22.52	12.28	10.83	6.10	8.86	0.87	4	0.87	5.31	5.75	9.41	10.79	9.96	6.65	4.13	1.97	-	-	NPT 3/4"
CDX 18-8300	X	23.39	13.50	12.80	6.10	10.04	0.93	4	0.87	6.10	5.39	10.98	12.36	11.61	7.64	4.33	1.97	-	-	NPT 3/4"
CDX 18-9420	X	23.39(50Hz) 20.47(60Hz)	13.50	12.80	6.10	10.04	0.93	4	0.87	6.10	7.01(50Hz) 5.39(60Hz)	10.98	12.36	11.61	7.64	4.33	1.97	-	-	NPT 3/4"
CDX 18-10900	X	25.12	14.13	13.98	7.09	11.02	1.02	4	0.87	6.50	6.06	11.93	12.60	12.60	7.80	4.72	1.97	-	-	NPT 3/4"

Type	Fig.	A	B	C	Holes				F	H	I	L	M	N	P	Q	R	Capacitor (µF)		Cable entry
					D	E	ØG	N°										220V 50Hz	115V 60Hz	
CDX 18-470	U	11.85	7.52	5.98	3.54	4.92	0.51	4	1.10	3.05	3.03	5.12	5.04	5.91	-	-	-	5	25	NPT 1/2"
CDX 18-910	U	13.78	8.58	6.57	4.13	5.51	0.51	4	1.18	3.54	3.78	5.91	5.51	6.89	-	-	-	12○ +20●	35	NPT 1/2"
CDX 18-1300	U	15.43	8.58	6.57	4.13	5.51	0.51	4	1.18	3.54	4.61	5.91	5.51	6.89	-	-	-	12○ +20●	35○ +10●	NPT 1/2"
CDX 18-1670	U	15.51	9.09	8.07	4.72	6.69	0.67	4	1.77	4.02	4.17	6.97	6.38	7.87	-	-	-	16○ +80●	40○ +120●	NPT 1/2"

Ia/In = ratio between start-up current and maximum current. ○ Start-up capacitor / ● Running capacitor. Several sizes are available with different mounting bolt patterns. Please contact sales office at Italvibras.

# CDX

## 6 poles - 1,000/1,200 rpm



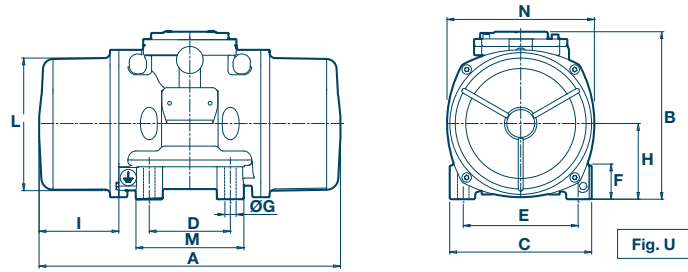
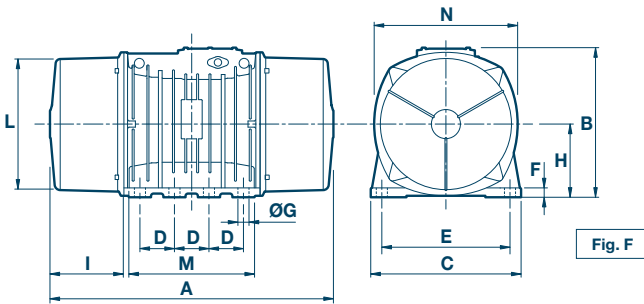
### Three-phase

DESCRIPTION				MECHANICAL SPECIFICATIONS						ELECTRICAL SPECIFICATIONS								
Code	Type	Type (EU)	SIZE	Certifications	Static moment*		Centrifugal force		Weight		Power Input		Power Output		Max. current		Ia/In	
					in-lbs	60Hz	50Hz	60Hz	50Hz	60Hz	50Hz	60Hz	50Hz	60Hz	50Hz	60Hz	400V 50Hz	460V 60Hz
602315	<b>CDX 12-110</b>	CDX 10/40-G/D	10	•	2.61	2.61	<b>73.8</b>	<b>106</b>	25.3	25.3	120	135	0.07	0.12	0.30	0.30	1.90	2.07
602316	<b>CDX 12-220</b>	CDX 10/100-G/D	10	•	7.32	7.32	<b>207</b>	<b>299</b>	30.8	30.8	120	135	0.07	0.12	0.30	0.30	1.90	2.07
602317	<b>CDX 12-575</b>	CDX 10/200-G/D	20	•	14.2	14.2	<b>403</b>	<b>581</b>	47.1	47.1	185	205	0.13	0.16	0.50	0.50	2.72	3.10
602318	<b>CDX 12-750</b>	CDX 10/310-G/D	30	•	24.9	18.2	<b>706</b>	<b>744</b>	66.7	63.8	350	380	0.29	0.36	0.72	0.68	2.63	2.79
602320	<b>CDX 12-1630</b>	CDX 10/550-G/D	35	• • • •	39.7	39.7	<b>1126</b>	<b>1621</b>	105	105	300	310	0.29	0.31	0.57	0.61	3.89	3.77
602325	<b>CDX 12-1990</b>	CDX 10/810-G/D	50	• • • •	62.9	48.8	<b>1780</b>	<b>1991</b>	151	139	570	680	0.50	0.59	1.24	1.30	4.00	3.69
602274	<b>CDX 12-2530</b>	CDX 10/1110-G/D	50	• • • •	88.0	62.2	<b>2490</b>	<b>2532</b>	169	154	700	870	0.65	0.73	1.52	1.65	4.15	4.24
602277	<b>CDX 12-3410</b>	CDX 10/1610-G/D	60	• • • •	127	83.6	<b>3604</b>	<b>3408</b>	240	216	1040	1250	0.99	1.2	2.09	2.10	4.93	5.24
602280	<b>CDX 12-6050</b>	CDX 10/2610-G/D	70	• • • •	202	150	<b>5722</b>	<b>6043</b>	330	299	1725	1800	2.0	2.0	3.80	3.70	5.40	6.03
602365	<b>CDX 12-8450</b>	CDX 10/3810-G/D	80	• • • •	298	207	<b>8417</b>	<b>8428</b>	451	411	2100	2300	2.3	2.5	4.75	4.75	4.19	4.67
602201	<b>CDX 12-45000</b>	CDX 10/22000-G	110	•	1741	1090	<b>49249</b>	<b>44458</b>	2042	1976	15600	19000	15.8	19.7	25.2	25.5	5.70	5.88

# 8 poles - 750/900 rpm

DESCRIPTION				MECHANICAL SPECIFICATIONS						ELECTRICAL SPECIFICATIONS								
Code	Type	Type (EU)	SIZE	Certifications	Static moment*		Centrifugal force		Weight		Power Input		Power Output		Max. current		Ia/In	
					in-lbs	60Hz	50Hz	60Hz	50Hz	60Hz	50Hz	60Hz	50Hz	60Hz	50Hz	60Hz	400V 50Hz	460V 60Hz
602576	<b>CDX 9-330</b>	CDX 075/150-G/D	20	•	14.2	14.2	<b>229</b>	<b>328</b>	47.1	47.1	230	250	0.15	0.16	0.85	0.76	2.13	2.11
602577	<b>CDX 9-570</b>	CDX 075/250-G/D	30	•	24.9	24.9	<b>398</b>	<b>572</b>	66.7	66.7	350	380	0.25	0.28	1.10	1.05	2.03	2.29
602578	<b>CDX 9-910</b>	CDX 075/400-G/D	35	• • • •	39.7	39.7	<b>634</b>	<b>913</b>	105	105	300	300	0.20	0.20	0.57	0.58	2.47	2.50
602581	<b>CDX 9-1440</b>	CDX 075/660-G/D	50	• • • •	62.9	62.9	<b>1003</b>	<b>1443</b>	151	151	340	340	0.25	0.25	0.87	0.90	2.87	3.11
602552	<b>CDX 9-2020</b>	CDX 075/910-G/D	50	• • • •	88.0	88.0	<b>1401</b>	<b>2017</b>	165	165	420	500	0.31	0.35	1.00	1.10	2.91	2.91
602555	<b>CDX 9-2920</b>	CDX 075/1310-G/D	60	• • • •	127	127	<b>2028</b>	<b>2919</b>	240	240	750	850	0.64	0.75	1.52	1.90	3.68	3.05
602558	<b>CDX 9-4640</b>	CDX 075/2110-G/D	70	• • • •	202	202	<b>3219</b>	<b>4635</b>	330	330	1480	1500	1.4	1.5	3.52	3.45	3.58	3.91
602602	<b>CDX 9-6830</b>	CDX 075/3110-G/D	80	• • • •	297	297	<b>4734</b>	<b>6818</b>	451	451	1850	2100	1.8	1.9	4.85	5.00	4.21	4.70
602513	<b>CDX 9-49000</b>	CDX 075/22000-G	110	•	2490	2131	<b>39611</b>	<b>48822</b>	2233	2158	10000	13000	10.9	13.8	21.4	22.0	6.97	5.50

\* Working moment = 2 x static moment.



DIMENSIONAL SPECIFICATIONS (inches)

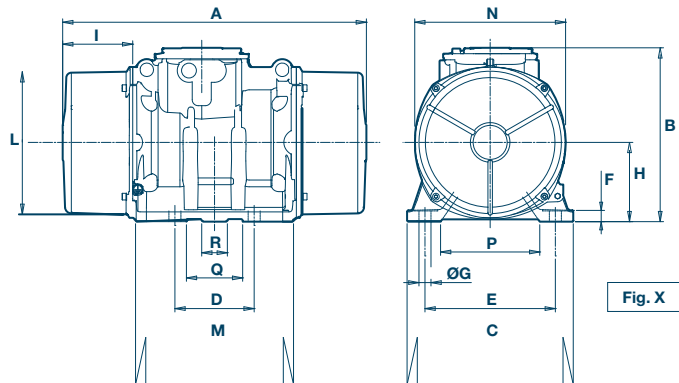
Type	Fig.	A	B	C	D	E	Holes		F	H	I	L	M	N	P	Q	R	Cable entry
							ØG	N°										
CDX 12-110	U	10.04	7.52	5.98	3.54	4.92	0.51	4	1.10	3.05	2.13	5.12	5.04	5.91	-	-	-	NPT 1/2"
CDX 12-220	U	11.85	7.52	5.98	3.54	4.92	0.51	4	1.10	3.05	3.03	5.12	5.04	5.91	-	-	-	NPT 1/2"
CDX 12-575	U	13.78	8.58	6.57	4.13	5.51	0.51	4	1.18	3.54	3.78	5.91	5.51	6.89	-	-	-	NPT 1/2"
CDX 12-750	U	15.51	9.09	8.07	4.72	6.69	0.67	4	1.77	4.02	4.17	6.97	6.38	7.87	-	-	-	NPT 1/2"
CDX 12-1630	U	17.56	9.80	8.27	4.72	6.69	0.67	4	2.05	4.41	4.65	7.56	6.30	8.58	-	-	-	NPT 3/4"
CDX 12-1990	X	23.39(50Hz) 20.47(60Hz)	10.98	9.25	5.51	7.48	0.87	4	0.71	4.57	6.73(50Hz) 5.28(60Hz)	8.27	9.69	8.86	5.51	3.15	-	NPT 3/4"
CDX 12-2530	X	23.39(50Hz) 20.47(60Hz)	10.98	9.25	5.51	7.48	0.87	4	0.71	4.57	6.73(50Hz) 5.28(60Hz)	8.27	9.69	8.86	5.51	3.15	-	NPT 3/4"
CDX 12-3410	X	24.96(50Hz) 22.52(60Hz)	12.28	10.83	6.10	8.86	0.87	4	0.87	5.31	6.97(50Hz) 5.75(60Hz)	9.41	10.79	9.96	6.65	4.13	1.97	NPT 3/4"
CDX 12-6050	X	26.61	13.50	12.80	6.10	10.04	0.93	4	0.87	6.10	7.01	10.98	12.36	11.61	7.64	4.33	1.97	NPT 3/4"
CDX 12-8450	X	28.90	14.13	13.98	7.09	11.02	1.02	4	0.87	6.50	7.95	11.93	12.60	12.60	7.80	4.72	1.97	NPT 3/4"
CDX 12-45000	F	45.28	24.17	24.02	5.51	20.47	1.77	8	1.50	11.69	11.71	21.34	20.08	22.91	-	-	-	NPT 1"

DIMENSIONAL SPECIFICATIONS (inches)

Type	Fig.	A	B	C	D	E	Holes		F	H	I	L	M	N	P	Q	R	Cable entry
							ØG	N°										
CDX 9-330	U	13.78	8.58	6.57	4.13	5.51	0.51	4	1.18	3.54	3.78	5.91	5.51	6.89	-	-	-	NPT 1/2"
CDX 9-570	U	15.51	9.09	8.07	4.72	6.69	0.67	4	1.77	4.02	4.17	6.97	6.38	7.87	-	-	-	NPT 1/2"
CDX 9-910	U	17.56	9.80	8.27	4.72	6.69	0.67	4	2.05	4.41	4.65	7.56	6.30	8.58	-	-	-	NPT 3/4"
CDX 9-1440	X	23.39	10.98	9.25	5.51	7.48	0.87	4	0.71	4.57	6.73	8.27	9.69	8.86	5.51	3.15	-	NPT 3/4"
CDX 9-2020	X	23.39	10.98	9.25	5.51	7.48	0.87	4	0.71	4.57	6.73	8.27	9.69	8.86	5.51	3.15	-	NPT 3/4"
CDX 9-2920	X	24.96	12.28	10.83	6.10	8.86	0.87	4	0.87	5.31	6.97	9.41	10.79	9.96	6.65	4.13	1.97	NPT 3/4"
CDX 9-4640	X	26.61	13.50	12.80	6.10	10.04	0.93	4	0.87	6.10	7.01	10.98	12.36	11.61	7.64	4.33	1.97	NPT 3/4"
CDX 9-6830	X	28.90	14.13	13.98	7.09	11.02	1.02	4	0.87	6.50	7.95	11.93	12.60	12.60	7.80	4.72	1.97	NPT 3/4"
CDX 9-49000	F	45.28	24.17	24.02	5.51	20.47	1.77	8	1.50	11.69	11.71	21.34	20.08	22.91	-	-	-	NPT 1"

Ia/In = ratio between start-up current and maximum current.

Several sizes are available with different mounting bolt patterns. Please contact sales office at Italvibras.



# **AIRMATIC**®

**WE'LL HANDLE IT.**

**AIRMATIC** founded in 1944, is a woman-owned Industrial Distributor, with installation and maintenance capabilities, offering equipment, machinery, and shop supplies to the Industrial, Construction, Utility, Government, and Commercial Markets. Our products and services are sold through three business units:

The **MATERIALS MANAGEMENT GROUP** provides products and services to industries that convey, store, transport, and process powders and bulk solids from aggregates, cement, and chemicals to foods, grains, metals, power generation, and waste water treatment applications;

The **SERVICE GROUP** provides fabrication, installation, and maintenance services to improve bulk materials handling efficiency; mechanical clean-out services for silos and hoppers to eliminate material flow problems; and shop repair/rebuilding and modifications services of products sold by the Company.

The **TOOL GROUP** provides power tools, personal protective equipment, materials-handling equipment, shop equipment and MRO supplies used for production, fabrication, assembly, metal removal, maintenance, and storage in manufacturing, construction, utility, and commercial applications.

**Our Customers tell us that by choosing AIRMATIC to solve their problems, they gain increased productivity, decreased costs, and a safer, cleaner work environment.**



**ITALVIBRAS** is an Italian company with more than 50 years of experience in electric vibrators. Designing and manufacturing its full range of products internally, and focusing relentlessly on quality, Italvibras has come to be recognized as a world leader in the industry. The company maintains facilities in France, Germany, Spain, and the United States. Its U.S. headquarters are in Princeton, Illinois.

## **AIRMATIC**

284 Three Tun Rd. Malvern, PA 19355

215.333.5600

infocenter@airmatic.com

airmatic.com