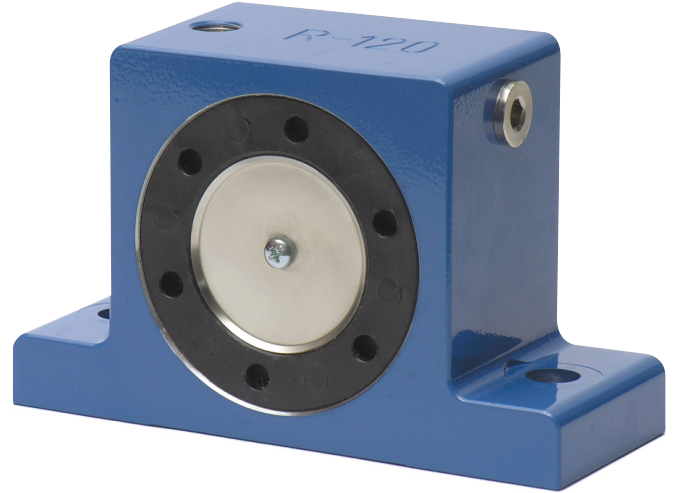


ROLLER VIBRATORS VR SERIES

ROLLER VIBRATORS, SIMPLE AND EFFICIENT FOR A WIDE RANGE OF APPLICATIONS.

Features

- High torque
- 10,000 – 36,000 RPM
- 240 – 2,812 lbf
- Continuously variable
- 302° F Max Temp
- Also available with ATEX certification



Field of application

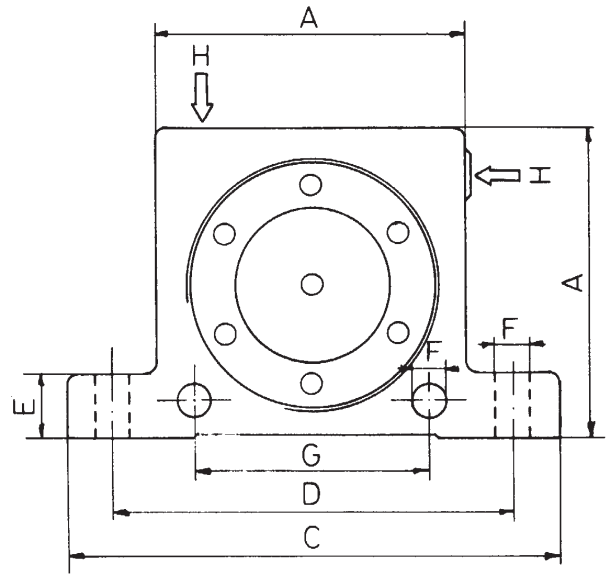
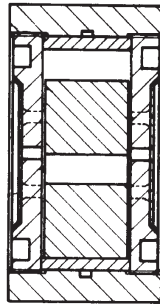
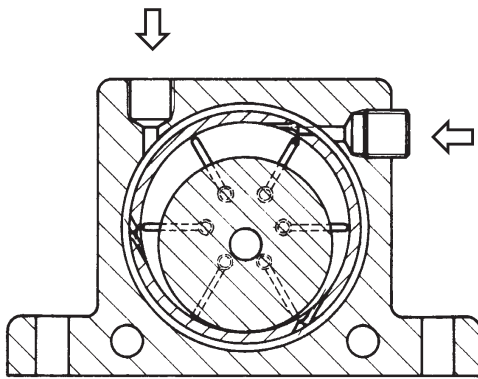
- Emptying of hoppers and chutes
- Screen filters
- Conveying of particulates
- Preventing adhesions in pipelines and silos
- Transporting of fine powders
- Compacting of plastic and concrete in troughs

Construction

- Extruded Aluminum Alloy Housing
- Cast Iron Strip
- Steel Roller
- Plastic End Plates

Model	Vibrations 1000 rpm			Centrifugal Force lbf			Consumption CF min ⁻¹		
	30 PSI	60 PSI	90 PSI	30 PSI	60 PSI	90 PSI	30 PSI	60 PSI	90 PSI
VR-50	25.0	35.0	36.0	240	657	950	3.5	5.1	6.9
VR-65	19.0	21.0	26.0	614	1089	1377	7.0	10.6	14.1
VR-80	15.5	18.5	19.0	675	1370	1676	10.2	15.2	20.1
VR-100	11.0	14.0	16.0	844	1519	2003	13.0	19.4	25.8
VR-120	10.0	11.5	12.5	1800	2250	2812	17.6	25.8	34.2

ROLLER VIBRATORS VR SERIES



Model	A inches	Width inches	C inches	D inches	E inches	F inches	G inches	H Thread BSP	Weight lb
VR-50	1.97	1.14	3.38	2.68	0.47	0.27	1.57	1/8"	0.53
VR-65	2.56	1.46	4.45	3.54	0.63	0.35	1.97	1/4"	1.20
VR-80	3.15	1.69	5.04	4.09	0.63	0.35	2.36	1/4"	2.10
VR-100	3.94	2.05	6.3	5.12	0.76	0.43	3.15	3/8"	4.00
VR-120	4.72	3.03	7.64	5.99	0.94	0.67	-	3/8"	9.40