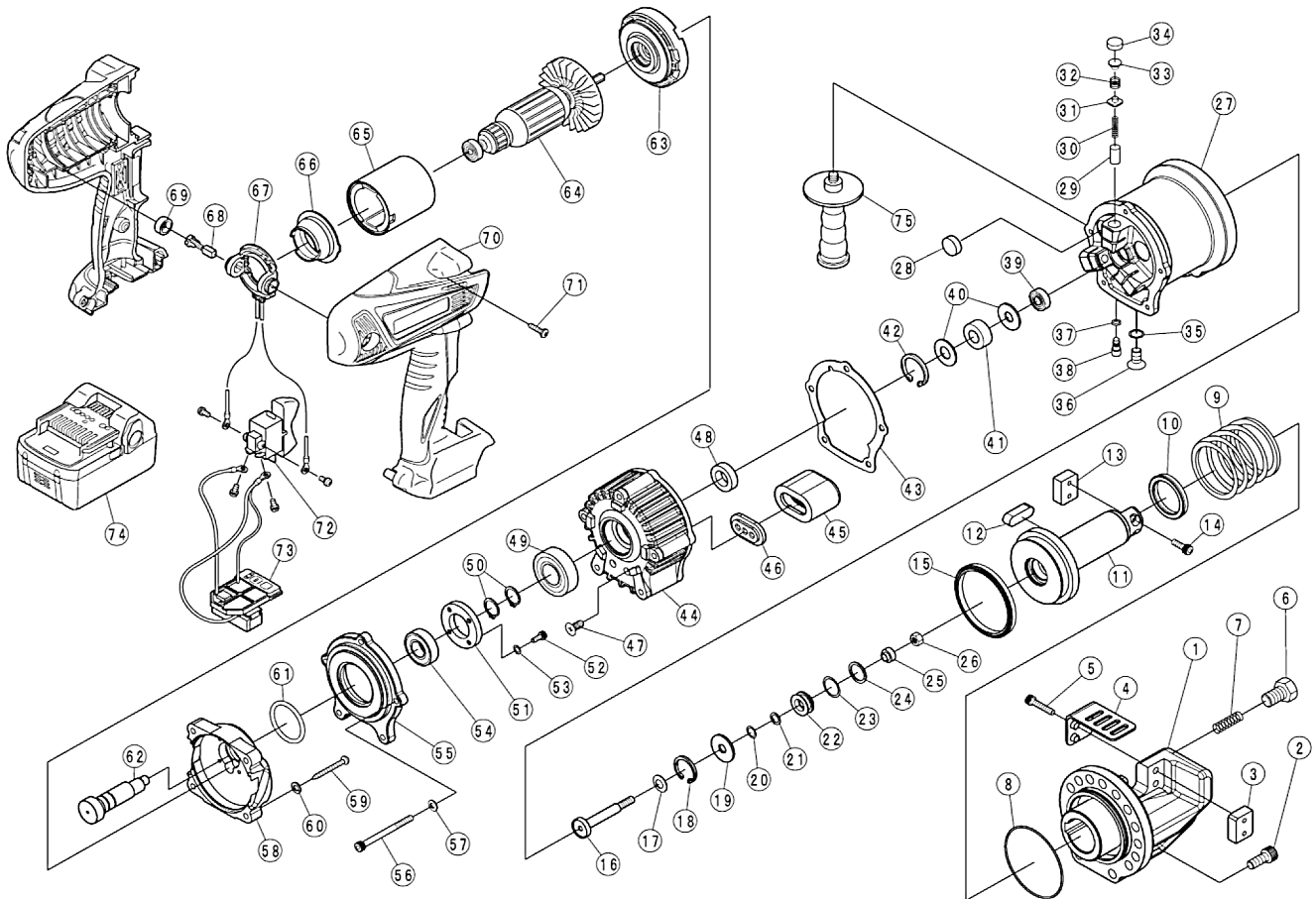


DCC-2018HL Portable Rebar Cutter Parts Guide



(5-2015)

DCC-2018HL Portable Rebar Cutter Parts Guide

Model DCC-2018HL Cordless Rebar Cutter			
Item	Part #	Description	Qty.
1	1C2066401	Housing (DCC-2018HL)	1
2	7CB08020	Cap Bolt (M8x20)	13
3	1C1610P	Cutter Block No. 0	1
4	1C4199700	Cutter Guard (DCC-2018HL)	1
5	1C1311B	CAP BOLT (M5x25) WITH WASHER	2
6	7B12020T11	STOPPER BOLT 12x20	1
7	1C4079400	LOCK SPRING	1
8	7ORS67	O RING S67 (DCC-2018HL)	1
9	1C16052	RETURN SPRING	1
10	7SKY32	SKY PACKING 32-42-6	1
11	1C3123600	PISTON	1
12	7K100829.5R2	PISTON KEY	1
13	1C1610P	CUTTER BLOCK NO. 0	1
14	7CB05015	CAP BOLT (M5X15) FAS#0154262	2
15	1C1604	SEAL PACKING (ODI60-70-6)	1
16	1CM20181	RETURN VALVE	1
17	7BW008	SPRING WASHER 8	1
18	7SRH026	SNAP RING H26	1
19	1CB4104002	GUIDE CLAMP	1
20	7BRP8B	BACK UP RING P8	1
21	7SPNC8	SPNC PACKING	1
22	1C16081	RETURN VALVE GUIDE	1
23	7BRP16B	BACK UP RING P16	1
24	7ORP16	O-RING P16	1
25	1C4242500	RETURN VALVE COLLAR	1
26	7NU006	U Nut M6	1
27	1C2066500	CYLINDER	1
28	3P1044	MAGNET FILTER	1
29	1C1327	RAM	3
30	1C1330	RAM RETURN SPRING	3
31	1C13281	DELIVERY VALVE (11mm)	3
32	1C1331	DELIVERY VALVE SPRING	3
33	1C13352	SPRING GUIDE	3
34	1C13292	PUMP HEAD SEAL (11mm)	3
35	7ORP10	O-RING P-10	1
36	7SB08012	FLAT HEAD BOLT 8X12	1
37	7ORS4	O-RING S4	1

38	1C4160601	RELEASE VALVE	1
39	7B08MC3	BALL BEARING 608MC3	1
40	1C1325	BEARING GUIDE	2
41	1C1340	NEEDLE BEARING (RMAST8)	1
42	1C1326	SNAP RING H27	1
43	1C4079300	PUMP CASE PACKING	1
44	1C2025800	PUMP CASE	1
45	1C4078900	AIR BAG	1
46	1C4079000	AIR BAG NUT	1
47	7ST06012B1	TAPPING SCREW B1 6X12	2
48	1C1342	OIL SEAL (SC-15-25-7)	1
49	76002VV	BALL BEARING 6002VV	1
50	7SRS015	SNAP RING S15	2
51	3AP4230600	Washer	1
52	7CB04010	BOLT, (4X10)	4
53	7SW004	SPRING WASHER M4	4
54	76902ZZ	BALL BEARING 6902ZZ	1
55	1C3129900	DISTANCE PIECE P	1
56	7CB05060	CAP BOLT (M5X60)	5
57	1C1311W	SPRING WASHER (M5) #91202A230	5
58	1C3129800	DISTANCE PIECE M	1
59	7NT05030	TAPPING SCREW (M5X30)	4
60	1C1311W	SPRING WASHER (M5) #91202A230	4
61	7JAS020371ATF	O-RING JAS02037	1
62	1C3129700	CAM SHAFT	1
63	7HTK333808B	INNER COVER	1
64	7HTK360922B	ARMATURE ASSY	1
65	7HTK333796B	MAGNET	1
66	7HTK333797B	DUST GUARD FIN	1
67	7HTK334311B	BRUSH HOLDER	1
68	7HTK999100B	CARBON BRUSH SET	SET
69	7HTK319847B	BRUSH CAP SET	2
70	1C3130000	MOTOR HOUSING SET	SET
71	7HTK301653B	FLANGE TAPPING SCREW D4X20	8
72	7HTK333795B	SWITCH	1
73	7HTK334313B	TERMINAL PIECE SET	SET
74	7BSL1830	BATTERY PACK BSL1830	2
75	1C1627	SIDE HANDLE	1