

Brute® Pneumatic Motor-Driven Vibrators

CCV Series

With an integral clamp foot, these powerful vibrators suit portable applications like railcar unloading. Also available for hydraulic power.

DV Series

For permanent installation on large vessels, these vibrators come with six-bolt-hole mount bases. Also available for hydraulic power.

CV Series

CV Series Vibrators incorporate two bolt-holes for permanent mounting on hoppers, bins, or chutes. Also available for hydraulic power.

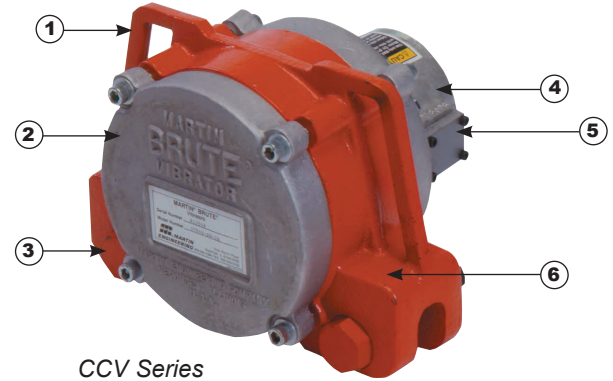
CC Series

With its cradle lug bracket, the CC Series is suited for applications requiring portability and position changes. Also available for hydraulic power.

Rule-of-thumb vibrator sizing: One pound of vibrator force for every ten pounds of bin content. Mount vibrator as close as possible to material outlet. Reinforce mount area to prevent flexure of bin wall at mount location.

Force output data derived from vibrator mounted to 10,000-pound (4530 kg) test block. Frequency and force will decrease on less rigid block.

1. High-Grade Ductile Iron Case provides maximum durability.
2. Low-Maintenance Bearings require lubrication after 500 hours of service.
3. Integral Clamp Foot on CCV Series provides portability and positive mounting.
4. Powerful, Efficient Motor for long service life, minimal power consumption.
5. Tapp Exhaust Port allows muffler installation to reduce operating noise.
6. Adjustable Eccentrics allow tuning of force output of most models to match application.



CCV Series



DV Series



CV Series



CC Series

PERFORMANCE DATA

Model	Force Output				Shipping Weight		Part Number
	Maximum		Minimum		lb	kg	
	lb	n	lb	n			
CV2.8-A CC2.8-A	5145	22,886	910	4048	49	22.2	CV28-A-GC CC28-A-GC
CCV4-A	5100	22,686	1500	6672	58	26.3	CCV4-A-GC
CCV6-A DV6-A	9605	42,725	5683	25,279	110 115	49.9 52.2	CCV6-A-GC DV6-A-GC

DIMENSIONS

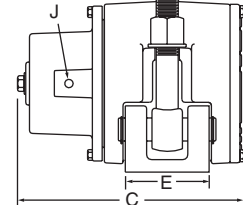
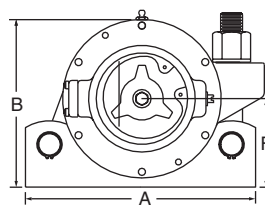
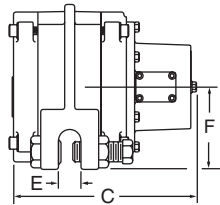
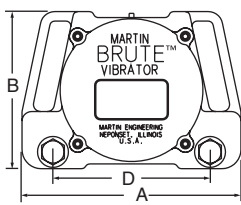
Model	A	B	C	D	E	F	G	H*	J**
CV2.8-A	9.87 (251)	6.87 (174)	9.81 (249)	8.00 (203)	3.0 (76)	3.375 (86)	0.875 (22)	3/4	1/2-14
CC2.8-A	9.00 (229)	7.12 (181)	9.09 (231)	N/A	3.0 (76)	4.20 (107)	N/A	N/A	1/2-14
CCV4-A	11.50 (292)	8.25 (210)	9.37 (238)	8.25 (210)	0.94 (24)	4.12 (105)	N/A	N/A	1/2-14
CCV6-A	14.50 (368)	11.30 (287)	12.87 (327)	11.25 (286)	1.0 (25)	5.62 (143)	N/A	N/A	3/4-14
DV6-A	18.00 (457)	11.00 (279)	12.87 (327)	6 holes 2 x 2 x 16 (51 x 51 x 406)	6.0 (152)	5.69 (145)	1.12 (28)	3/4	3/4-14

*Bolt Size **Pipe Size

CCV Series

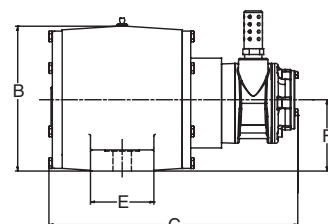
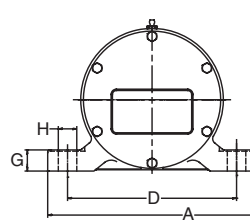
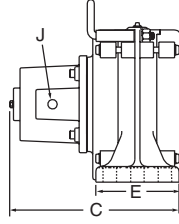
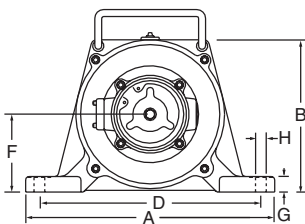
CC Series

Shown with optional Cradle Lug Bracket, P/N 28732.



DV Series

CV Series



BRUTE PNEUMATIC ACCESSORIES

Part Number	Description
28732	Cradle Lug Bracket for CC2.8
V-826032	Handle Kit for CV2.8
32271	Safety Cable Assembly
17214	Ball Valve 3/4" NPT
14762	Filter, Regulator, Lubricator Combination, 3/4" NPT
17970	Hose Whip for CV2.8, CC2.8, CCV4
17971	Hose Whip for CCV6 & DV6
14766	Air Motor Oil (qt)
16994	Mobil 28 Aviation (380g tube)